

Building Community Leaders: Minnesota Act Early Delegate Network In Diverse Communities

Jennifer Hall-Lande, PhD

With contributions from Anab Gulaid and Kelly Nye-Lengerman

Minnesota Act Early Timeline

2011-2018 State systems grant awardee

Building an Act Early delegate network across in to promote developmental screening and MN Act Early Campaign.

2013 Minneapolis Somali ASD Prevalence Project

Studied ASD prevalence rates in MPS while looking at ASD rates in Somali community. Outreach with Somali families with “Act Early” resources.



Partnership with MN Department of Health and MN Help Me Grow
Increase Act Early network in diverse communities state to promote early developmental screening with the MN Act Early Campaign and MN Act Early delegates.

MN Act Early Ambassador Project promoting and coordinating MN Act Early outreach in Minnesota.

Outreach in Diverse Communities

Goal: To promote early screening and identification of neurodevelopmental disabilities in culturally diverse communities through focused outreach of the LTSAE campaign message.

Selected Outreach Activities:

- Webinars promoting to Act Early outreach in culturally/linguistically diverse communities.
- Outreach events in diverse communities (Head Starts, Parent groups, child care).
- Recruit Act Early delegates from diverse communities (e.g. Somali, Hmong, Latino).
- Customize Act Early materials for local diverse communities.
- Podcasts, radio outreach, and You Tube public service announcements.
- **Partnership with MN-LEND and MN-ADDM project:** Extend MN-ADDM community outreach using MN Act Early campaign materials and resources.



Yog koj xar tau kev pab rhuu' tsooj koj tut mangam bej kev koj hoo' thob' sab yeev uad' cas yag koj muaj kev thooj, mus sab rau hauv

HelpMeGrowMN.org
1-866-693-4769

Yog koj xar paub rhuu, mus sab rau hauv
www.cdc.gov/actearly 1-800-CDC-INFO (800-232-4636)

Yog koj xar tau DAWB qhov uas qhia "Paub Nyas. Pab Thaum Nhoov," rau cov riamhu, los xar rhuu kev pab hauv koj lub zyg lub zyg.



Act Early Initiatives

What is “Learn the Signs. Act Early.”

CDC’s “**Learn the Signs. Act Early.**” aims to improve early identification of children with ASD and other developmental disabilities to connect to services/supports they need.

The program is made up of **3 components:**

- Health education campaign
- Act Early initiative
- Research and evaluation



Learn the Signs. Act Early.

State Systems Grant Overview

The State Systems grants are for a two-year period and are designed to aid state teams in building upon state programming currently in place or as a complement other state/local activities, rather than implement a new program. The National Center on Birth Defects and Developmental Disabilities (NCBDDD) at the CDC launched the *Learn the Signs. Act Early.* (LTSAE) program in 2004 to provide educational information to parents, health care professionals and early care and education providers about the importance of early identification and intervention for children with signs of ASD/DD.



Outreach in Somali Community

- Podcasts in Somali on early signs.
 - Numerous outreach events with Somali families and community.
 - Translated and customized materials.
 - Milestone booklet (Somali version) has been downloaded 8,756 times.
- Over 3,000 translated developmental brochures handed out to individual Somali parents and families.
- Team of Act Early delegates promoting early developmental screening with families.
 - MN LEND fellow project Somali outreach and YouTube video on early signs and early screening.

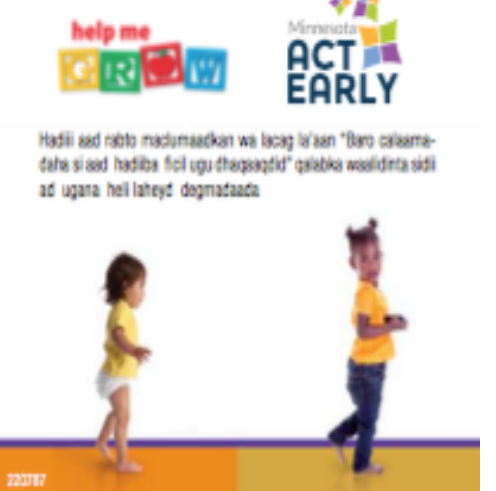


Macluumaad dheeraad ah ee xaqiqaadaha aad samayso karto hadaad wax tabarayaan, la xiriir guruggaaga taabarka ama mid ka mid ah qaybaha.

HelpMeGrowMN.org
1-866-693-4769

OR VISIT:

itsae.umn.edu



Outreach in Hmong Community

- Customize and translated Act Early materials.
- Partnership with several Hmong parent organizations such as Hmong Helping Hands.
- Webinar “ Building Connections with Hmong Families: Culturally Competent Approaches to Child Development”
- Outreach at several large Hmong cultural Events and festivals.
- Team of Act Early delegates from Hmong community doing Act Early outreach and promoting early developmental screening with families .
- Hmong radio Public Service Announcements on early screening and early signs of ASD.



